

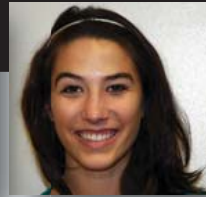
WHAT'S NEW AT R&M

JUNE 2009

R&M CONSULTANTS, INC.



R&M actively participates in DOT&PF's Adopt-A-Highway Program. The firm is responsible for the section of the Seward Highway between Huffman Road and O'Malley Road. Rain or shine, R&M crews pick up trash on this stretch of road three times per year.



R&M'S GROWING INTERN PROGRAM CONTRIBUTING TO FIRM SUCCESS

R&M has carried out a successful intern program for many years. This program has been a valuable training ground for construction administration staff, and has resulted in the hiring of several permanent employees who interned with the firm prior to receiving their degrees. This summer, we have 15 interns working in our materials laboratory, engineering department, and supporting our administrative staff.

Rich Giessel, who manages R&M's Construction Services Department says, "student interns are the future of our company. Each student brings a unique set of gifts and talents to R&M that enhances our current capabilities. Our role as managers is to encourage growth of those talents and provide training and directed practice in engineering fundamentals that provide a sound foundation for professional development."

R&M's 2009 interns include: **Holly DeLand** (5th year intern, UAF), **Ben Bachand**, (3rd year intern, UAA), **Sam Meredith**, (3rd year intern, UAA), **Kim Anderson** (3rd year intern, UAA), **Emery Tyler** (3rd year intern, UAA), **Phillip Hearn** (2nd year intern, UAA), **Simon Gilliland**, (2nd year intern, Montana State University), **Aaron Mortier** (2nd year intern, Hillsdale College), **Irene Turletes** (2nd year intern, UAA), **Allen Cassel** (2nd year intern, George Fox University), **Rori Redick** (1st year intern, UAA), **Mike Thompson** (1st year intern, USC), **Michael Horstkoetter** (1st year intern, George Fox University), **Morgan Welch** (1st year intern, UMass), and **Erin Erslund** (1st year intern, University of Portland).



Rich Giessel, P.E.
Senior Vice President - Construction Services

COMING NEXT MONTH:

- **Steve Cegelka, P.E.** joins R&M as Group Manager: Structural Engineering
- Meet R&M's **Tim Grier, P.E.**
- **Amy Knickerbocker** joins R&M as Administrative Assistant

SAVE THE DATE!
annual R&M golf tournament
a benefit for Bean's Cafe
Friday, July 31st

Contact **Andrea Soland** for more information
907.646.9629 or asoland@rmconsult.com

R&M STREAMLINES ACCOUNTING FUNCTIONS



R&M is pleased to announce that **Christine Morbach**, who previously had responsibility for Accounts Payable, is also now responsible for R&M's Accounts Receivable. The departure of an accounting staff member led R&M to look at the functions of our accounting staff and realize that Christine's skills, combined with those of **Linnzi Doerr**, who joined R&M as Accounting Supervisor in 2007, would easily allow the two of them to accommodate all of R&M's accounting needs. Christine and Linnzi work closely with R&M's CEO Bret Coburn.



R&M ADDS THREE TO CA AND ENGINEERING STAFF

R&M is pleased to announce the addition of three engineers to our team: **Matt Morrow, P.E.** joined R&M's Construction Administration Group as a Project Engineer on June 4th; **Ben Bliss, P.E.** joined R&M's Construction Administration Group as a Project Engineer on May 4th; and **Matt Majoros** joined R&M's Engineering Department as a Staff Engineer on May 18th.

Matt Morrow has more than 33 years of design, construction and construction administration experience. His career includes 25 years with DOT&PF, 20 years of that in the Western District Nome office. With DOT&PF, Matt spent 19 years in construction, working his way up through the ranks as a technician, then assistant project engineer and project engineer on highway, bridge and airport projects. Prior to joining R&M, he spent nine years with other local consulting firms. He attended the University of Alaska Anchorage and Middlebury College in Vermont, studying geology, engineering geology and English. Matt will be the Project Engineer on R&M's contract with DOT&PF to provide construction administration services for the Ouzinkie Airport Relocation.



Ben Bliss has more than 15 years of experience, including over 13 years on highway construction projects. He is experienced with the construction administration of both State and Federally-funded highway programs. Ben is experienced in interpreting engineering plans, specifications and design standards; contract documents, quantity take-offs and cost estimates; and monitoring and overseeing contract work. Ben holds an A.A. in General Education from Fresno Community College and a B.S. in Civil Engineering from California State University, Fresno. He is serving as the Office Engineer on airport and highway construction administration contracts with DOT&PF.



Matt Majoros joined R&M following graduation from the University of Alaska Anchorage with a B.S. in Civil Engineering. On summer breaks from college, Matt was employed as an Engineering Intern with the City and Borough of Juneau. In this position, he assisted the Borough's in-house architects and engineers with capital improvement projects. Since joining R&M, Matt has supported R&M's Surface Transportation Group on the Kotzebue Shore Avenue project and the Anaktuvuk Pass Contact Creek Bridge project.

R&M FINDS SUCCESS WITH AERONAUTICAL SURVEYS

Since 1998, R&M has successfully performed and provided aeronautical surveys at more than 50 Alaskan airports. The firm got started in this work by performing high precision geodetic control surveys for the USACE/NGS. Over the past 11 years, R&M has gained unmatched experience performing aeronautical surveys in compliance with FAA No. 405 specifications, and more recently under the new FAA AC 150/5300 16A, 17B and 18B. The firm is currently performing these surveys for a variety of clients, including DOT&PF, the North Slope Borough, and several private consulting firms at airports throughout Alaska.

Bill Preston, PLS, a Senior Land Surveyor with R&M, has performed field surveys, office reductions, computations and prepared final deliverables on all of R&M's past FAA No. 405 Surveys, as well as on recent surveys performed by R&M under the new AC's. Under Bill's guidance, the Fairbanks International Airport Aeronautical GIS Survey was the first of its kind completed in Alaska, and just the second in the United States to be submitted under the new AC's.

